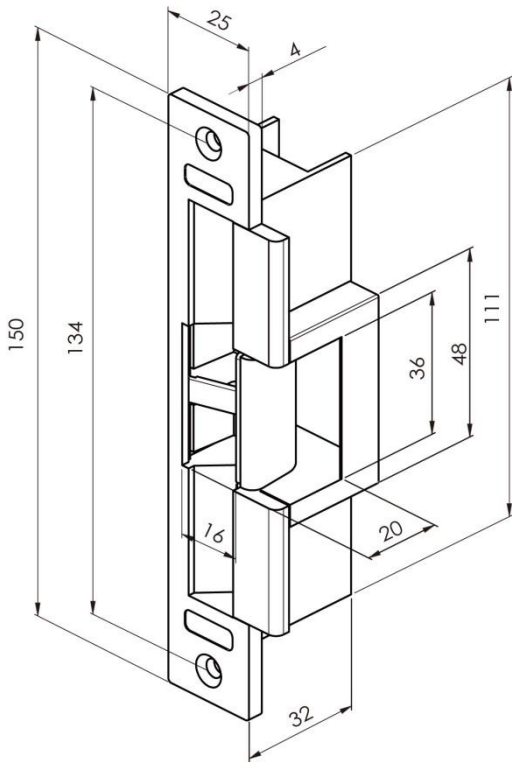
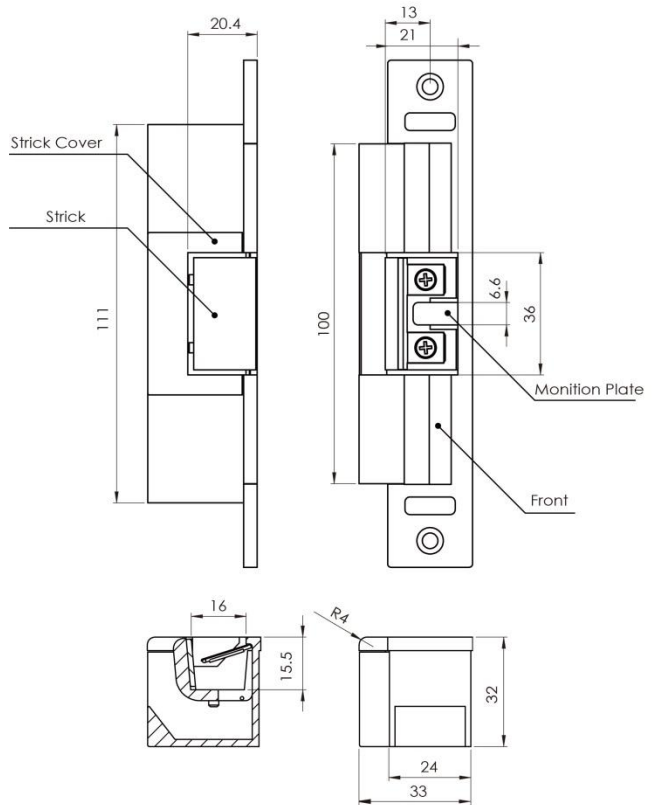


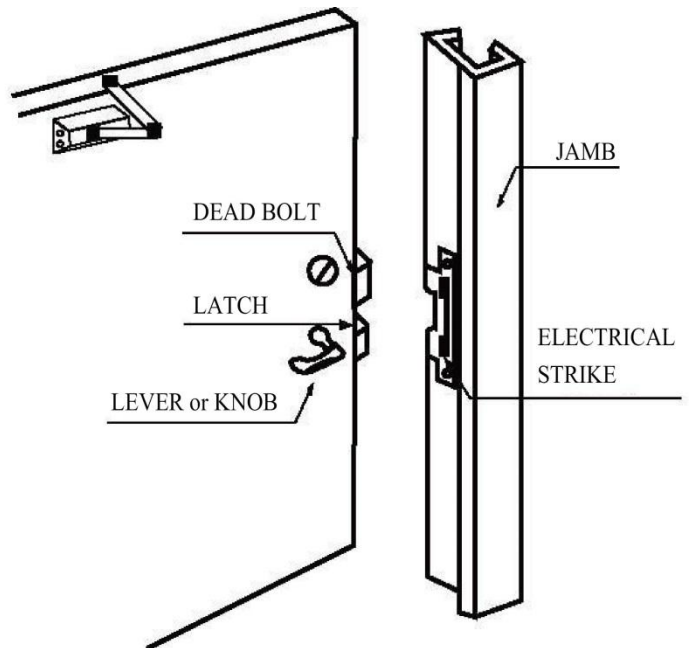
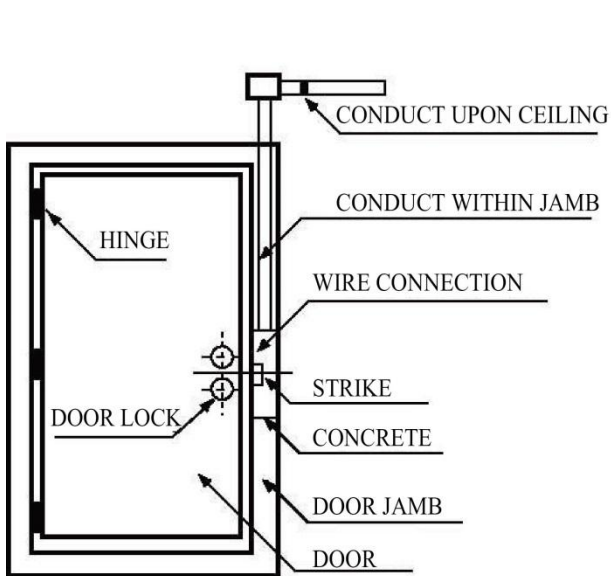
STRIKE BODY (Unit: mm)



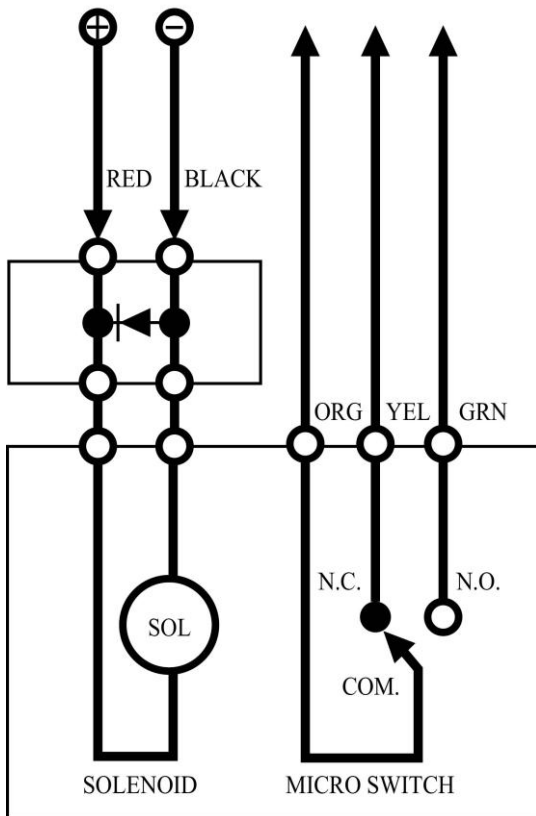
MECHANICAL DIMENSION (Unit: mm)



INSTALLATION EXAMPLE



WIRING DIAGRAM



Because the voltage drop will result in being unable to drive the solenoid coil. Therefore, please make sure the thickness of the wire and the distance of the wiring, the voltage supply is good enough for normal operation.

Electrical Specification :

Voltage / Current (DC) : DC 12V 120mA \pm 10%

Solenoid : Continuous duty

Status Sensors : Micro switch of maximum DC 12V 2A

Mechanical Specification :

Case Material : Stainless and Zinc-Aluminum Alloy

NOTE :

1. Apply the right voltage (DC 12V) and polarities.
2. To avoid the stress on the connection wires.
3. Do not paint or leave any particle to choke mechanism.
4. Illegal handling or maintenance is prohibited.
5. Please don't drop any engine oil or lubricant oil on the strike.
6. The filing dust may clog the lock and affect the operation.

※ Door lock status.

When Monition Plate is pressed, the ORG and YEL is door close status.

